



New FlameSelect® Gas Cooktops

A new and better way to cook on gas


BOSCH

Invented for life

How FlameSelect® differs from conventional gas cooktops.

Precision heating

Achieve the exact flame power at each level, every time, with each of the pre-defined power levels.



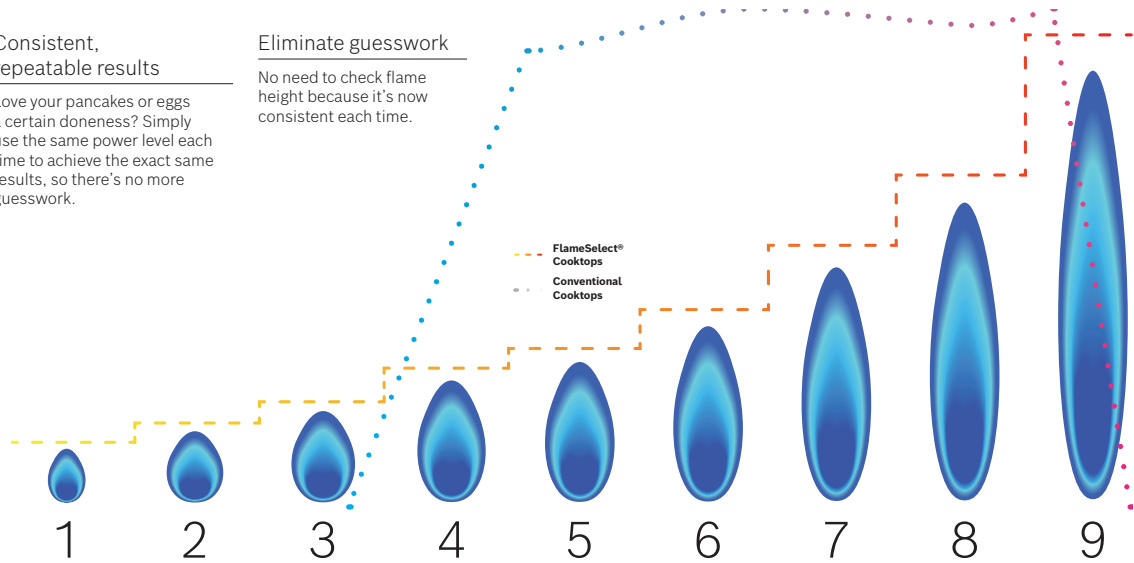
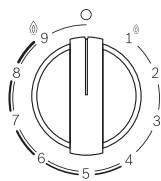
Scan to learn more

Consistent, repeatable results

Love your pancakes or eggs a certain doneness? Simply use the same power level each time to achieve the exact same results, so there's no more guesswork.

Eliminate guesswork

No need to check flame height because it's now consistent each time.



Power Level 1-2 Simmer

Great for melting chocolate



Power Level 3 Medium Low

Great for setting custard



Power Level 4 Medium

Great for delicately browning crêpes



Power Level 5 Medium Medium

Great for folding omelettes



Power Level 6-8 Medium High - High Medium

Great for searing salmon



Power Level 9 High

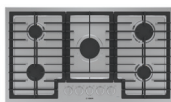
Great for searing steak



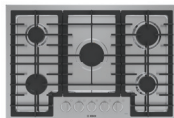
Step Up Chart

500 Series

- 16K max BTU power burner
- High efficiency burners
- OptiSim® simmer burner (exclude 24" model)
- Single burner "on" indicator light
- Continuous cast iron grates
- Stainless color metal knobs
- Easier to clean stainless steel maintop
- Flame Safe Safety Device
- LP conversion kit included



NGM5658UC
36"



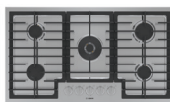
NGM5058UC
30"



NGM5458UC
24"

800 Series FlameSelect

- + 17K max BTU dual flame power burner
- + FlameSelect® technology
- + Knob illumination
- + Dishwasher-safe grates
- + Residual heat indicators



NGM8658UC
36"



NGM8058UC
30"



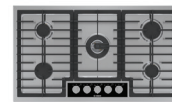
NGM8648UC
Black Stainless Steel
36"



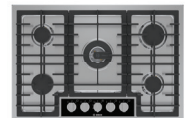
NGM8048UC
Black Stainless Steel
30"

Benchmark® Series FlameSelect

- ++ 18K max BTU dual flame power burner
- ++ Sleek black glass control panel
- ++ 7 segment LED digital display



NGMP658UC
36"



NGMP058UC
30"



NGMP677UC
Glass
36"



NGMP077UC
Glass
30"



New FlameSelect® Gas Cooktops



BOSCH

Invented for life

Key Features



FlameSelect® – a better way to cook on gas

Nine precise power levels deliver accurate flame height at each level every time for consistent, repeatable results. There's no more need to check the flame height.



Dual-Flame Power Burner

The dual-flame power burner has 2 rings for low and high flame settings so you can go from simmer to sear with ease. Levels 1-3 use the inner ring, and 4-9 use both rings for maximum heat.



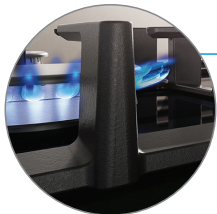
OptiSim® Burner

The OptiSim® burner (front left) has a specially designed thicker burner cap which allows for better control of the flame at the lowest setting for precise simmering and melting. The cap design also distributes heat better and helps prevent hot spots in the pan.



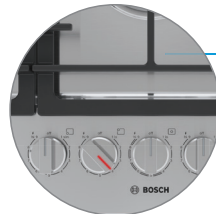
Easy to clean surface

Available in grey tempered glass or stainless steel with rounded edges, the low profile cooking surface is sleek and easy to clean.



Flame Safe safety mechanism

For added safety and peace of mind, the gas valve closes if the flame hasn't heated the burner. If the flame goes out, the gas is automatically shut off.



Residual Heat Indicators

Distinctive red LED light indicates if burners are on and flash if the burner is still hot after turning off the cooktop.*

*Light display varies by series.



Dishwasher-Safe Grates

With a special enameling process, the heavy-duty continuous surface grates can be easily and quickly cleaned in the dishwasher instead of by hand.



Display

Benchmark® models feature a red LED display that shows the burner power level.