

This Month: Bosch Gas and Induction Cooktops

Bosch cooktops are designed to deliver perfect results with minimal effort. Every Bosch cooktop combines simplicity with intuitive usability. So recipes are followed more efficiently, meals are made quickly, and cleanup happens easily. Because at the end of a long day, Bosch believes cooking should bring joy not frustration.

Gas Cooktops

Automatic Re-ignition

- Featured on **every** Bosch gas cooktop
- Single point ignition, only the impacted burner will be triggered
- **If the flame blows out, it will automatically relight so the dish continues to cook**

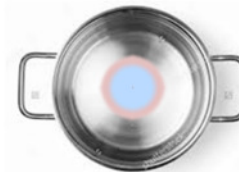


High Efficiency Burners

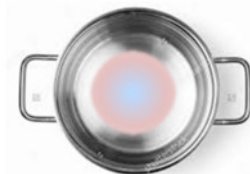
- Air is drawn from the top of the cooking surface
- Cabinet pressure will not effect performance
- Powerful high and low BTU rates
- **The flame wont pull away from the burner allowing for faster boil times**

OptiSim™ Burners

- Featured on 30" and 36" cooktops
- Low simmer performance—400 BTUs
- Diffuses heat with a thicker and bigger shaped burner cap
- **Simmer delicate sauces and minimize the risk of scorching**



Traditional Simmer Cap



OptiSim® Burner Cap

500 Series Features

NGM5456UC 24"
NGM5056UC 30"
NGM5656UC 36"

- 16K max. BTU Performance
- (24" 11,5K BTU)
- OptiSim® Burner
- Automatic Re-Ignition
- Black Metal Knobs
- LP Kit Included

800 Series Step up Features

NGM8056UC 30"
NGM8656UC 36"
NGM8046UC 30"
NGM8646UC 36"

- 19K max. BTU Performance
- 30" - 5 Burner
- Single Indicator Light
- Stainless Steel Knobs

Did you know?

Bosch Gas Cooktops can be installed with Speed Oven, Drawer Microwaves, Warming Drawers, Built-in Ovens and Downdrafts

Induction Cooktops



SpeedBoost®

- Increases element power to 150% for up to 10 minutes
- Boost 2 pans at once
- Bring liquids to a boil quickly.

Cook Timer

- Automatic shut off timer for each element
- Maximum set time is 99 minutes
- Don't let distractions ruin the dish – no need to worry about missed timers.



AutoChef®

- Monitors and regulates pan temperature when engaged
- Five temperature settings to select from:
very low | low | med-low | med-high | high
- **Maintains the perfect amount of heat while cooking to deliver consistent results time and time again!**

Hood Control

- Control a HomeConnect™ hood from the cooktop's control panel
- Set the hood to automatically turn on when cooktop elements are activated
- No more reaching up high or cleaning fingerprints off a stainless steel hood.**



500 Series Features

- NIT5469UC: 24"
- NIT5068UC: 30"
- NIT5668UC: 36"

800 Series Step-up Features

- NIT8069UC/SUC: 30"
- NIT8669UC/SUC: 36"

- 17 heat levels
- Count Down element shut off timers plus kitchen timer
- 11" 3,700 W center element
- 9" 3,700 W element
- PreciseSelect® control on 36"
- Frameless Only
- AutoChef®
- Hood Control
- PreciseSelect® controls 30" & 36"
- Framed and frameless options
- Frameless Model Number:
- NIT8069US 30"
- NIT8669UC 36"
- 12" dual 5,400 W element on 36"
- 11" 3,700 W element on 30"
- Hood Control

Did you know?
Bosch 30" 800 Series Induction Cooktop was rated #1 by a Leading Consumer Magazine

www.AskBoschLowes.com

1. Chat with a knowledgeable representative
2. Get answers to all of your Bosch appliance questions
Obtain product information, inspiration and selling tools
3. Gain knowledge of the most current products
4. View Lowe's / Bosch current promotions
5. Order missing parts for displays
6. Mobile device optimized

**In a rush for Bosch spec sheet? Use BSH
“Text4spec” Text a model number from your cell
phone to 21432 and we’ll send you a spec sheet
back.**