

Bosch 800 Series Laundry — With Home Connect™



Simply connected with Home Connect™

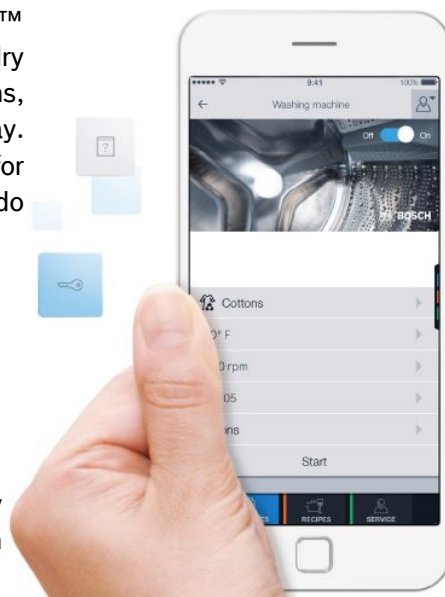
Why Bosch Home Connect™ Laundry?

As the only brand with a connected compact washer and dryer in the market, Bosch is revolutionizing the way you do laundry, all while maintaining our commitment to quality and performance.

With the intuitive Home Connect™ app, you can control your laundry and access services and solutions, whether you are at home or away. Or if you ever need service for your appliance, now Bosch can do a remote diagnostics.

With our newest Washer and Dryer combo, it takes the guesswork out of doing laundry with a series of connected features that simplify doing laundry and help deliver perfect results.

The ability to remotely control and monitor laundry from almost anywhere means you can start or adjust your laundry even when you are on the go by simply using your smartphone or tablet. This is especially handy for those last-minute changes in life.



Stay on top of your energy and water consumption.

Home Connect™ provides energy and water consumption information for each laundry program.

Get status updates for your laundry.

With Home Connect™, your device can send you status updates, including when a cycle is complete, giving you the freedom to focus on more important things.

Start your laundry, even when you're on-the-go.

With your Bosch connected washer and dryer, you can start a cycle from anywhere*, using your smartphone or tablet. Those last-minute changes in life are no longer an inconvenience.

Take the guesswork out of doing laundry.

Thanks to Home Connect™, you don't have to guess which setting to select for your clothes. Easy Start option recommends the best program based on the types of clothes you select in the app.

*Connectivity and speed varies based on network and Wi-Fi levels

Quality and Performance



BOSCH
Invented for life

Wash and Dry in 30 minutes.



Our 800 series Laundry pairs features a 15 minute wash and a 15 minute dry cycle, the fastest combined wash and dry in the industry. The cycle can be used on any small, lightly soiled load, such as five dress shirts. shirts.

Large Capacity.

Even with a small eco footprint, our Home Connect™ washer and dryer can hold up to 18 large bath towels, meaning less loads of laundry and more time with your family.

Installation Cost Savings.

- \$** No additional Power Outlets or Wall Receptacles needed. Bosch washers plug into dryers so only one receptacle is needed, saving you the cost of additional power outlets.
- \$\$** No ducting needed. Our condensation drying system requires no ducting which saves you money.
- \$\$\$** No Leak Risk. A smitty pan may no longer be needed* with our AquaStop® Plus and AquaShield® water leak protection system. **Check with local building codes for complete requirements.*

ENERGY STAR® Qualified.



All Bosch washers are ENERGY STAR® qualified, and our Home Connect™ model is no exception. Additionally, Bosch 500 and 800 Series dryers are also ENERGY STAR® qualified.

AquaStop® Plus.

The AquaStop® Plus System is in our 800 Series washers an advanced leak protection and containment system. AquaStop® hoses also features sensors that automatically block the water inlet and activate the drain pump if a possible leak is detected—even if you're not at home.

Washer: WAW285H2UC

- 2.2 Cubic Feet (Holds up to 18 bath towels)
- Premium LED controls with enhanced text and icons
- Remote Start your washer with Home Connect™ an Easy Start option for your wash
- 14 Wash Cycles: Permanent Press | Permanent Press Heavy Soil | Delicates | Quick 30 Min | Rinse | Hand Wash/Wool | Drain/Spin | Cotton (Normal) | Whitest Whites | Towels | Sanitize | Super Quick 15 Min | Bulky/ Large Items | Drum Clean
- 10 Options: EcoPerfect (Reduces Energy Consumption by Adjusting the Temperature) | Prewash, Rinse Plus | Remote Start | Start/Pause | Finish in | Spin Speed | Temperature | SpeedPerfect™ (Provides Up to 40% Faster Wash Time*) | Stains Program Treats: Oil, Food Based, Red Wine and Grass Based Stains
- Illuminated selection jog dial
- Interior drum LED light
- AquaShield® Hose
- AquaStop® Plus Exclusive Water Safety System
- 50/71 dBA

**As compared to Perm Press Heavy Soil cycle without SpeedPerfect™*

Dryer: WTG865H2UC

- 4.0 Cubic Feet (Holds up to 18 bath towels)
- Remote Start your dryer with Home Connect™
- Stainless steel drum | Reversible door
- 14 Dry Cycles: Permanent Press | Cotton | Towels | AntiShrink | Sanitize | Hand Wash/Wool | Bulky/ Large Items | Quick Dry Auto | Jeans | Delicates | SuperQuick 15 | Quick 40 | Time Dry | Air Fluff/No Heat
- 9 Options: Low Heat | Time Dry | Remote Start | Start/Pause | Finish in | Level Adjust | Dryness Level | End Signal | Wrinkle Block
- Premium LED controls with enhanced text and icons
- Interior drum LED light

Flexible Accessories:

- Stationary Stacking Kit (WTZ20410)
- Stacking Kit with Pull Out Tray (WTZ11400)
- Drying Rack (WMZ20600)
- Washer Pedestal (WMZ20490)
- Dryer Pedestal (WMZ20500)

In a rush for Bosch spec sheet? Use BSH "Text4spec"—Text a model number from your cell phone to 21432 and we'll send you a spec sheet back.

This Month: Resources

- **www.AskBoschLowe.com**
 - Chat with a knowledgeable representative
 - Get answers to all of your Bosch appliance questions
 - Obtain product information, inspiration and selling tools
 - Gain knowledge of the most current products
 - View Lowe's / Bosch current promotions
 - Order missing parts for displays
 - Mobile device optimized
- **Lowe.com/Bosch**
 - Brand page on Lowe.com
- **Text for Specs**
 - Text any Bosch model number to 21432 and receive product specifications back in just seconds!
- **Contact**
 - Customer Service - 800-944-2904



10-12% Rebate

via Bosch Visa® Prepaid Card

Purchase at least three qualifying Bosch kitchen appliances (Ascenta, 300, 500, 800) to receive 10% of the entire purchase price on a Visa prepaid card via mail-in rebate. Include at least three eligible 800 series pieces and receive a 12% rebate (before taxes and after discounts).

*Locality products and accessories not eligible. All 2016 purchases must be made on this valid through 12/31/2016 and expires 12/31/2016. Offer available while supplies last. Excludes alterations, EPP and repairs.

To receive your Bosch Visa Prepaid Card:

1. Purchase three or more qualifying Bosch kitchen appliances (Ascenta, 300, 500, 800) from a participating Lowe's store between 1/1/2016 and 6/30/2016. Purchase price is price paid before taxes and after discounts and does not include installation or delivery. Claims must be postmarked by 7/30/2016. - Claims postmarked after this date will not be honored.
2. Limit one (1) per household.
3. Please allow 8-8 weeks for processing. If you do not receive your prepaid card after 8 weeks, visit www.lowe.com/rebates, or you may call 1-877-304-1223.
4. Please keep a copy of all materials submitted for your records.
5. Mail this completed form along with a photocopy of your cash register receipt showing purchase of qualifying product(s).

MAIL TO:

Lowe's Bosch Kitchen Suite Rebate
Dept. 153087
PO Box 750616
El Paso, TX 88575-0616

***SUBMIT ONLINE:**

Sales Date
Location#
Invoice#
Dept # 153087

*If purchased online, please mail and order is received.

Name _____

Address _____

City _____ State _____ Zip Code _____

Mobile Phone (_____) _____ E-Mail _____

Check the status of your Visa prepaid card at www.lowe.com/rebates

Other terms and conditions. Requests from groups or organizations will not be honored. Fraudulent submission of multiple requests could result in federal prosecution under the U.S. Mail Fraud Statutes (18 USC, Section 1341 and 1342). Offer good in U.S.A. only. Void where prohibited, taxed or restricted by law. If you do not receive your prepaid card within 8-8 weeks, please call 1-877-304-1223 or visit www.lowe.com/rebates. This form may not be reproduced, traded or sold. Please keep a copy of this coupon for future reference. Bosch Visa Prepaid Cards are issued by MetLife® Member FDIC, pursuant to a license from Visa U.S.A. Inc. This card does not have cash access and can be used anywhere Visa debit cards are accepted. Card valid through expiration date shown on front of card. Cardholders are subject to terms and conditions of the card as set forth by the issuing bank.

